



SECURAIL & SAFEACCESS RAIL

Rail range

Version 1.0 – 2 May 2018

1. Overview

Floor, wall or overhead mounted, the Fall Protec Securail rail system is a multi-purpose, multi-user system with a wide range of applications. It can be used for fall arrest or as a suspension system for Rope Access.



DIRECTORS: GD FORSTER, AF NEL, R GRIESEL CA(SA), FH STAPELBERG

Telephone No.: 086 110 1213 (Switchboard)
Email Address: access@gravitygh.co.za
Web Address: www.gravityaccess.co.za

P.O. Box 72190
Lynnwood Ridge
Pretoria
0040



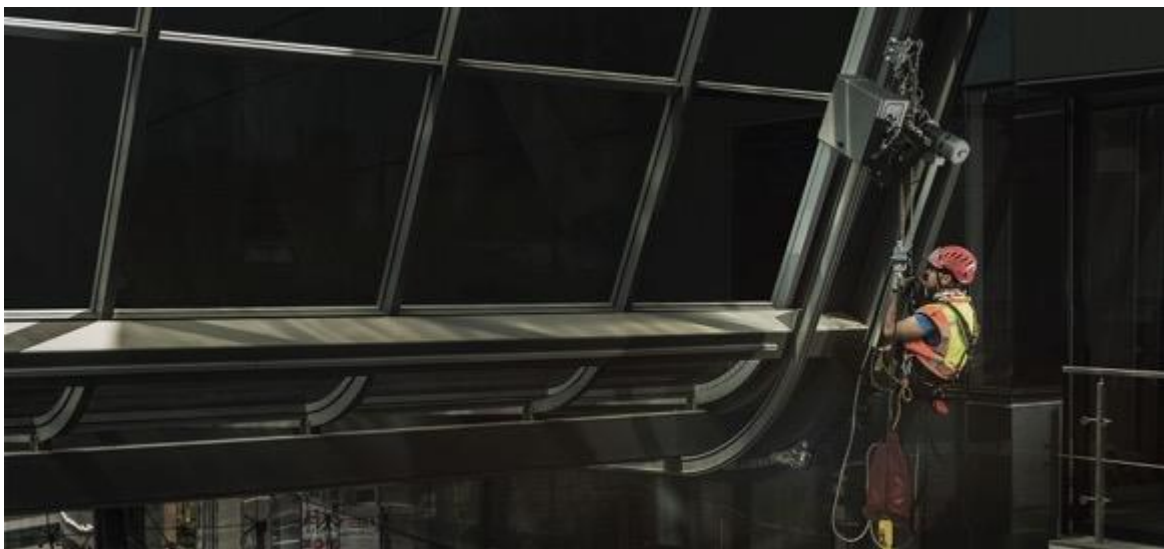
FALLPROTEC

Height Safety Products



2. Features & benefits

- 100% tie-off (no need to disconnect anywhere along the rail)
- Minimal deflection (suited to severely restricted fall clearance applications)
- Adaptable to a range of surfaces and orientations (can be secured virtually anywhere)
- Absorbs expansion and contraction of roof sheets (structural integration with roof covers)
- Aesthetically pleasing and elegant design (suitable for flagship design projects)
- Spans of up to 6m (fewer attachments save costs and increases aesthetics)
- Up to 4 users per system (scalable)
- Custom solutions available (engineering support for difficult access solutions)
- A range of components to suite different designs (full range of aesthetic to functional designs)
- Available as a stand-alone, mobile system (can be used without fixing it to a structure)
- Compatible with sliding ladders, rope access methods, Bosuns chair and suspended access platforms



DIRECTORS: GD FORSTER, AF NEL, R GRIESEL CA(SA), FH STAPELBERG



3. Applications

- Facilitates safe movement on horizontal, vertical or inclined surfaces
- Suited to difficult access solutions for complex layouts
- Warehouse, plant and factory roofs
- Architectural highlights and monuments
- Loading bays and docks
- Commercial office and mall roofs
- Residential and agricultural roofs
- Airport, educational and hospital building roofs
- Large plant machinery, production facilities and overhead cranes
- Electrical pylons
- Suspended façade access strategies (rope access and suspended access platform systems)
- Confined work spaces